



QUICK SELECTION / Selezione veloce

input speed (n_1) = 1400 min⁻¹

Output Speed n_2 [min ⁻¹]	Ratio i	Motor power P_{1M} [kW]	Output torque M_{2M} [Nm]	Service factor f.s.	Nominal power P_{1R} [kW]	Nominal torque M_{2R} [Nm]	Available B5 motor flanges				Available B14 motor flanges			Dynamic efficiency RD	Tooth Module [mm]	Ratios code	
							-C	-D	-E	-F	-R	-T	-U				
							71	80	90	100 112	80	90	100 112				
200	7	4.0	168	1.6	6.4	270		B	B			B	B		88	4.23	01
140	10	4.0	218	1.4	5.5	298		B	B			B	B		80	4.2	02
100	14	4.0	298	1.1	4.3	320		B	B			B	B		78	4.5	03
70	20	3.0	323	1.0	2.9	309		B	B			B	B		79	3.4	04
64	22	2.2	258	1.2	2.6	309		B	B			B	B		78	3.1	05
50	28	2.2	315	1.2	2.5	364		B	B	B		B	B		75	4.7	06
37	38	1.5	276	1.3	1.9	353		B	B			B	B		71	3.5	07
30	46	1.5	320	1.1	1.6	342	B	B				B			68	3.1	08
27	52	1.1	258	1.2	1.3	303	B	B				B			66	2.7	09
21	67	1.1	327	0.9	1.02	303	B	B				B			65	2.1	10
18.9	74	0.75	220	1.3	0.96	281	B	B				B			58	1.9	11
14.6	96	0.55	191	1.3	0.73	254	B	B				B			53	1.5	12

Motor Flanges Available
Flange Motore Disponibili

B) Supplied with Reduction Bushing
Fornito con Bussola di Riduzione

B) Available on Request without reduction bushing
Disponibile a Richiesta senza Bussola di Riduzione

C) Motor Flange Holes Position
Posizione Fori Flangia Motore

EN Unit **M85** is supplied with synthetic oil, providing "long life" lubrication. For mounting position V5-V6 please contact us. See table 1 for lubrication and recommended quantity. In table 2 please see possible radial loads and axial loads on the gearbox.

LUBRICATION M85 Oil Quantity 1.20 Lt.

SHELL Omala S4 WE 320

ENI Telium VSF 320

For all details on lubrication and plugs check our website **tab. 1**
Per maggiori dettagli su lubrificazione e tappi olio vedi il nostro sito web

I Il riduttore tipo **M85** viene fornito lubrificato a vita con olio sintetico. Per posizioni V5-V6 contattare il ns. servizio tecnico. Vedi tab.1 per oli e quantità consigliati. In tab.2 sono presenti i carichi radiali e assiali applicabili al riduttore.

D Für die Lebensdauerschmierung ist das Getriebe der Größe **M85** mit synthetischem Öl befüllt. Bei Einbaulage V5 oder V6 bitten wir um Rücksprache. In Tabelle 1 ist die Schmiermenge und das empfohlene Schmiermittel angegeben. In Tabelle 2 sind die zulässigen Radial - und Axialbelastungen des Getriebes aufgeführt.

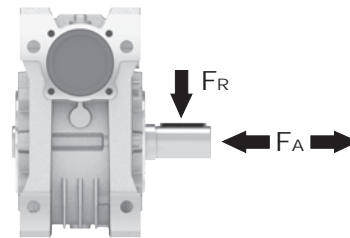
F Le réducteur de type **M85** est fourni lubrifié à vie avec de l'huile synthétique. Concernant les positions V5.V6, contactez notre service d'assistance technique. Voir tableau 1 concernant les huiles et les quantités conseillées. Les charges radiales et axiales applicables au réducteur sont précisées dans le tableau 2.

E El reductor tamaño **M85** se suministra, lubricado de por vida con aceite sintético. Para las posiciones V5 y V6 contactar con nuestro servicio técnico. Ver tabla 1, para cantidades y aceites recomendados. En la tabla 2, se encuentran las cargas radiales y axiales admitidas por el reductor.

RADIAL AND AXIAL LOADS

Output shaft

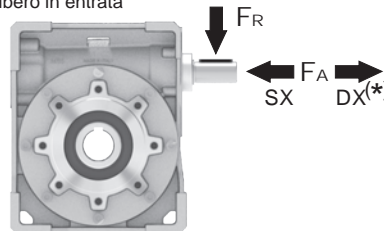
Albero di uscita



n_2 [min ⁻¹]	FA [N]	FR [N]
200	500	2500
150	580	2900
100	600	3000
75	700	3500
50	800	4000
25	1000	5000
15	1160	5800

Input shaft

albero in entrata



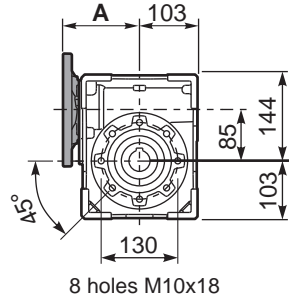
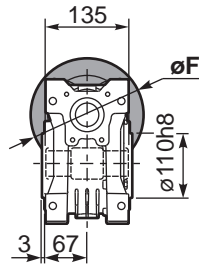
n_1 [min ⁻¹]	FA [N]	FR [N]
1400	130	650

***Strong axial loads in the DX direction are not allowed.**
Non sono consentiti forti carichi assiali con direzione DX

tab. 2

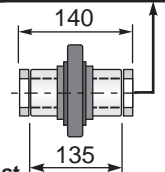
PM85FB... Basic wormbox
Riduttore base

M. flanges	Kit code	øF	A
71B5	K023.4.041	160	116.5
80/90B5	K023.4.042	200	118.5
100/112B5	K023.4.043	250	127.5
80B14	K085.4.046	120	118.5
90B14	K085.4.045	140	118.5
100/112B14	K085.4.047	160	127.5



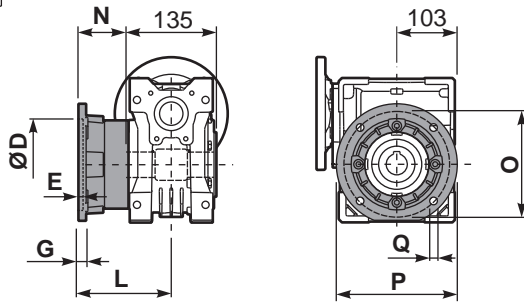
Gearbox weight
peso riduttore **12.1 kg**

ø H8	B	C	*Spacer code
35 Standard	38.3	10	KM85.3.035
38 on request	41.3	10	KM85.3.038

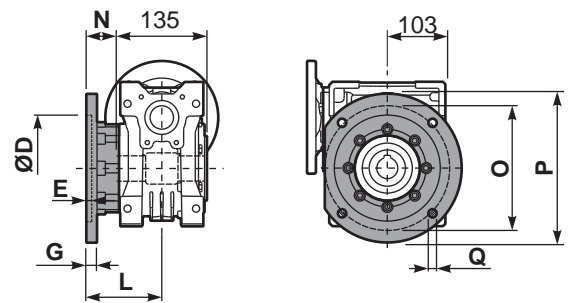


***On Request**
output shaft with spacers

PM85FC... Output flange
Flangia uscita



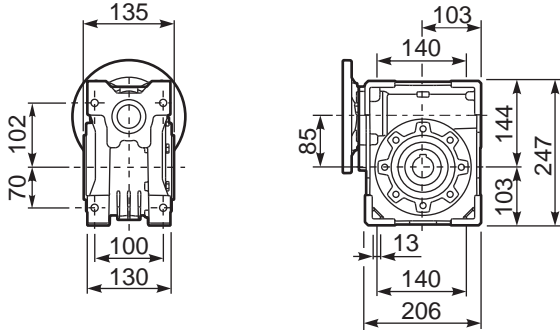
PM85F1 Output flange
Flangia uscita



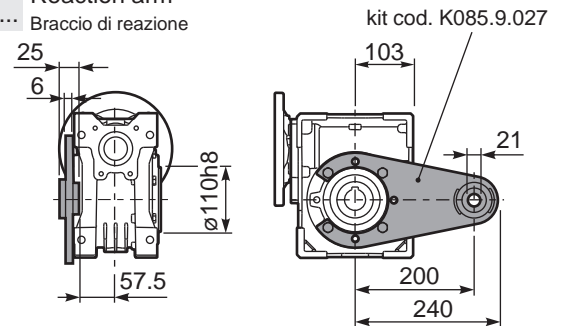
type B	øD	E	G	L	N	O	P	Q	kit code
FC	152 H8	5	16	111	43.5	176	205	13	K085.9.010
FL	180 H8	6	18	122	54.5	215	250	14	KM85.9.011

type S	øD	E	G	L	N	O	P	Q	kit code
F1	130 H8	5	13	109.5	42	165	200	13	KS085.9.015
F2	152 H8	5	16	151.5	84	176	205	13	K085.9.010 K085.0.201

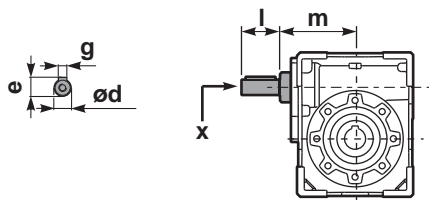
PM85FB... Feet
Piedini



PM85BR... Reaction arm
Braccio di reazione

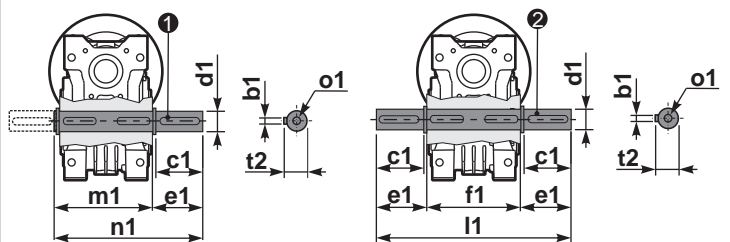


RM85FB... Input shaft
Albero in entrata



PM85.....S... Single Shaft
Albero lento semplice

PM85.....D... Double Shaft
Albero lento bisp.



① kit cod. K085.5.028 type B

② kit cod. K085.5.029 type B

	ød	e	g	l	m	x	kit code
type B	25 h6	28	8	50	112	M8x20	① K085.5.007 PAM90 ② K085.5.008 PAM100
type S	24 h6	27	8	50	112	M8x20	① KS085.5.009 PAM90 ② KS085.5.011 PAM100

	b1	c1	d1	e1	f1	l1	m1	n1	t2	o1
type B	10	60	35 ^{-0.005} _{-0.020}	73.5	135	282	141	214.5	38	M10x23
type S	-	-	-	-	-	-	-	-	-	-