



#### QUICK SELECTION / Selezione veloce

input speed ( $n_1$ ) = 1400 min<sup>-1</sup>

Output Speed $n_2$ [min <sup>-1</sup> ]	Ratio $i$	Motor power $P_{1M}$ [kW]	Output torque $M_{2M}$ [Nm]	Service factor f.s.	Nominal power $P_{1R}$ [kW]	Nominal torque $M_{2R}$ [Nm]	Available B5 motor flanges				Available B14 motor flanges			Dynamic efficiency RD	Tooth Module [mm]	Ratios code	
							-B	-C	-D	-E	-Q	-R	-T				
							63	71	80	90	71	80	90				
200	7	1.8	71	1.8	3.2	128		B	B			B-C	B-C		83	3.1	01
140	10	1.8	99	1.3	2.4	134		B	B			B-C	B-C		81	3.1	02
93	15	1.5	121	1.2	1.8	148		B	B			B-C	B-C		79	3.1	03
74	19	1.5	152	1.0	1.4	145		B	B			B-C	B-C		78	2.6	04
58	24	1.1	135	1.1	1.2	142		B	B			B-C	B-C		75	2.0	05
47	30	1.1	167	1.0	1.06	160		B	B			B-C	B-C		74	3.2	06
39	36	0.75	125	1.2	0.88	147		B	B			B-C	B-C		68	2.7	07
35	40	0.75	135	1.1	0.82	148		B	B			B-C	B-C		66	2.5	13
31	45	0.55	111	1.2	0.67	135	B	B				B-C	C		66	2.1	08
23	60	0.55	140	1.0	0.53	135	B	B				B-C	C		62	1.6	12
21	67	0.55	151	0.8	0.45	124	B	B				B-C	C		60	1.5	09
17.5	80	0.37	115	1.1	0.39	122	B	B				B-C	C		57	1.3	10
14.9	94	0.37	123	1.0	0.36	119	B	B				B-C	C		52	1.1	11

Motor Flanges Available  
Flange Motore Disponibili

B) Supplied with Reduction Bushing  
Fornito con Bussola di Riduzione

B) Available on Request without reduction bushing  
Disponibile a Richiesta senza Bussola di Riduzione

C) Motor Flange Holes Position  
Posizione Fori Flangia Motore

**EN** Unit **M63** is supplied with synthetic oil, providing "long life" lubrication. For mounting position V5-V6 please contact us.  
See table 1 for lubrication and recommended quantity. In table 2 please see possible radial loads and axial loads on the gearbox.

**I** Il riduttore tipo **M63** viene fornito lubrificato a vita con olio sintetico. Per posizioni V5-V6 contattare il ns. servizio tecnico.  
Vedi tab.1 per oli e quantità consigliati. In tab.2 sono presenti i carichi radiali e assiali applicabili al riduttore.

**D** Für die Lebensdauerschmierung ist das Getriebe der Größe **M63** mit synthetischem Öl befüllt. Bei Einbaulage V5 oder V6 bitten wir um Rücksprache. In Tabelle 1 ist die Schmiermenge und das empfohlene Schmiermittel angegeben. In Tabelle 2 sind die zulässigen Radial - und Axialbelastungen des Getriebes aufgeführt.

**F** Le réducteur de type **M63** est fourni lubrifié à vie avec de l'huile synthétique. Concernant les positions V5.V6, contactez notre service d'assistance technique. Voir tableau 1 concernant les huiles et les quantités conseillées. Les charges radiales et axiales applicables au réducteur sont précisées dans le tableau 2.

**E** El reductor tamaño **M63** se suministra, lubricado de por vida con aceite sintético. Para las posiciones V5 y V6 contactar con nuestro servicio técnico. Ver tabla 1, para cantidades y aceites recomendados. En la tabla 2, se encuentran las cargas radiales y axiales admitidas por el reductor.

#### LUBRICATION M63 Oil Quantity 0.30 Lt.

SHELL Omala S4 WE 320

ENI Telium VSF 320

For all details on lubrication and plugs check our website

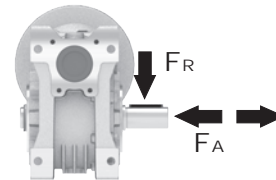
tab. 1

Per maggiori dettagli su lubrificazione e tappi olio vedi il nostro sito web

#### RADIAL AND AXIAL LOADS

##### Output shaft

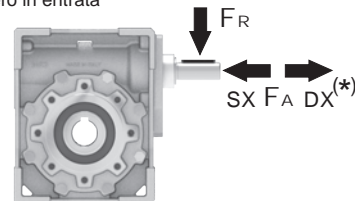
Albero di uscita



$n_2$ [min <sup>-1</sup> ]	FA [N]	FR [N]
200	360	1800
150	400	2000
100	460	2300
75	500	2500
50	600	3000
25	700	3800
15	800	4000

##### Input shaft

albero in entrata



$n_1$ [min <sup>-1</sup> ]	FA [N]	FR [N]
1400	90	450

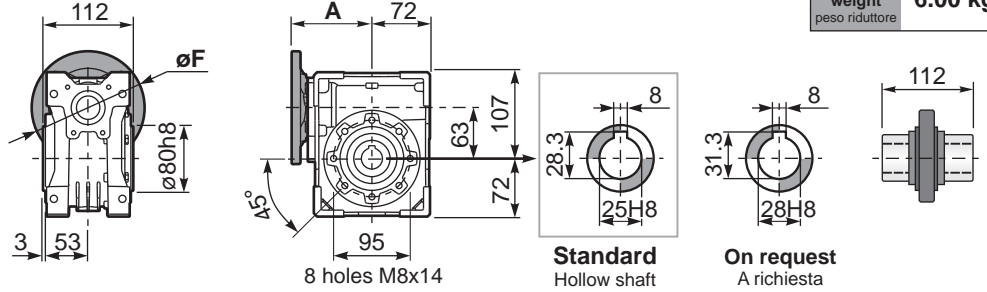
\*Strong axial loads in the DX direction are not allowed.  
Non sono consentiti forti carichi assiali con direzione DX

tab. 2

**PM63FB...** Basic wormbox  
Riduttore base

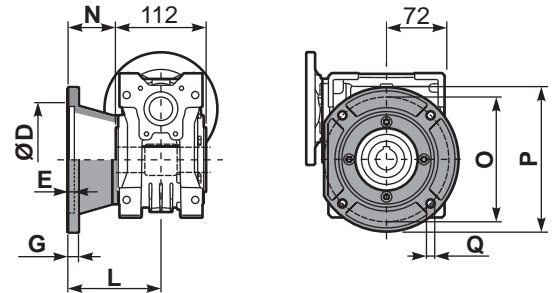
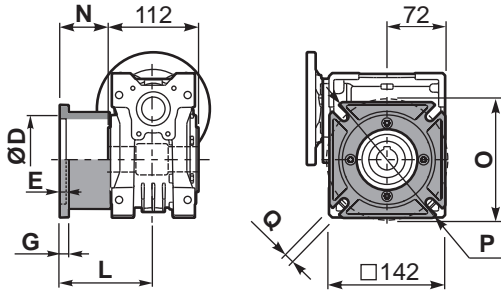
Gearbox weight **6.00 kg**  
peso riduttore

M. flanges	Kit code	øF	A
<b>63B5</b>	K063.4.041	140	100.5
<b>71B5</b>	K063.4.042	160	98.5
<b>80/90B5</b>	K063.4.043	200	100.5
<b>71B14</b>	K063.4.047	105	98.5
<b>80B14</b>	K063.4.046	120	100.5
<b>90B14</b>	K063.4.041	140	100.5



**PM63FC...** Square flange  
Flangia quadrata

**PM63F1...** Round flange  
Flangia rotonda

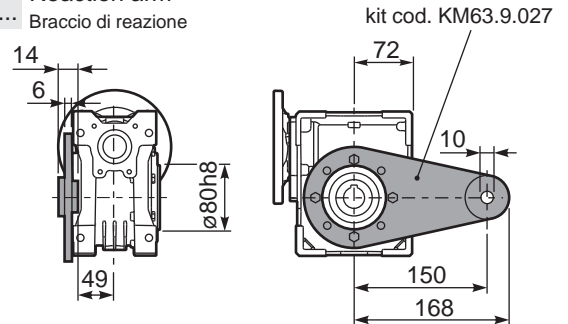
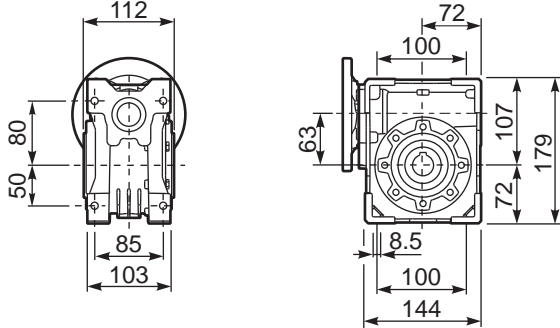


type B	øD	E	G	L	N	O	P	Q	kit code
<b>FC</b>	115 H8	6	10	82	26	150	180	11	KM63.9.010
<b>FL</b>	115 H8	6	10	112	56	150	180	11	KM63.9.011

type S	øD	E	G	L	N	O	P	Q	kit code
<b>F1</b>	130 H8	5	10	98	42	165	200	11	KM63.9.012
<b>F2</b>	130 H8	5	10	107	51	165	200	11	KM63.9.013
<b>F3</b>	110 H8	5	16.5	80.5	24.5	130	160	11	KM63.9.014

**PM63FB...** Feet  
Piedini

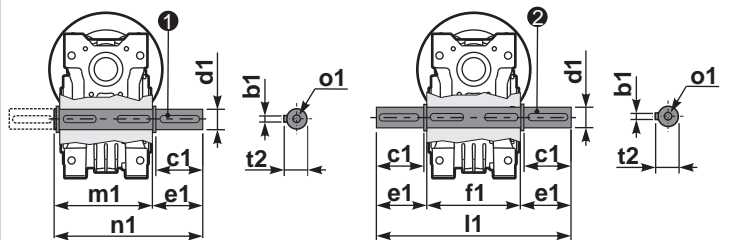
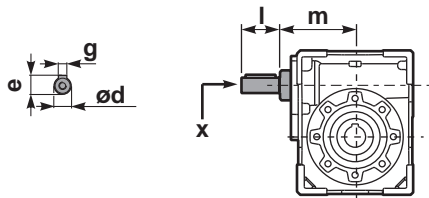
**PM63BR...** Reaction arm  
Braccio di reazione



**RM63FB...** Input shaft  
Albero in entrata

**PM63....S...** Single Shaft  
Albero lento semplice

**PM63....D...** Double Shaft  
Albero lento bisp.



① kit cod. KM63.5.028 type B      ② kit cod. KM63.5.029 type B

	ød	e	g	l	m	x	kit code
type B	18 h6	20.5	6	45	94	M6x16	① K063.5.006 PAM80 ② K063.5.007 PAM90
type S	19 h6	21.5	6	40	94	M8x20	① KS063.5.008 PAM80 ② KS063.5.009 PAM90

	b1	c1	d1	e1	f1	l1	m1	n1	t2	o1
type B	8	50	25 h6	53.5	112	219	119.5	173	28	M10x23
type S	-	-	-	-	-	-	-	-	-	-